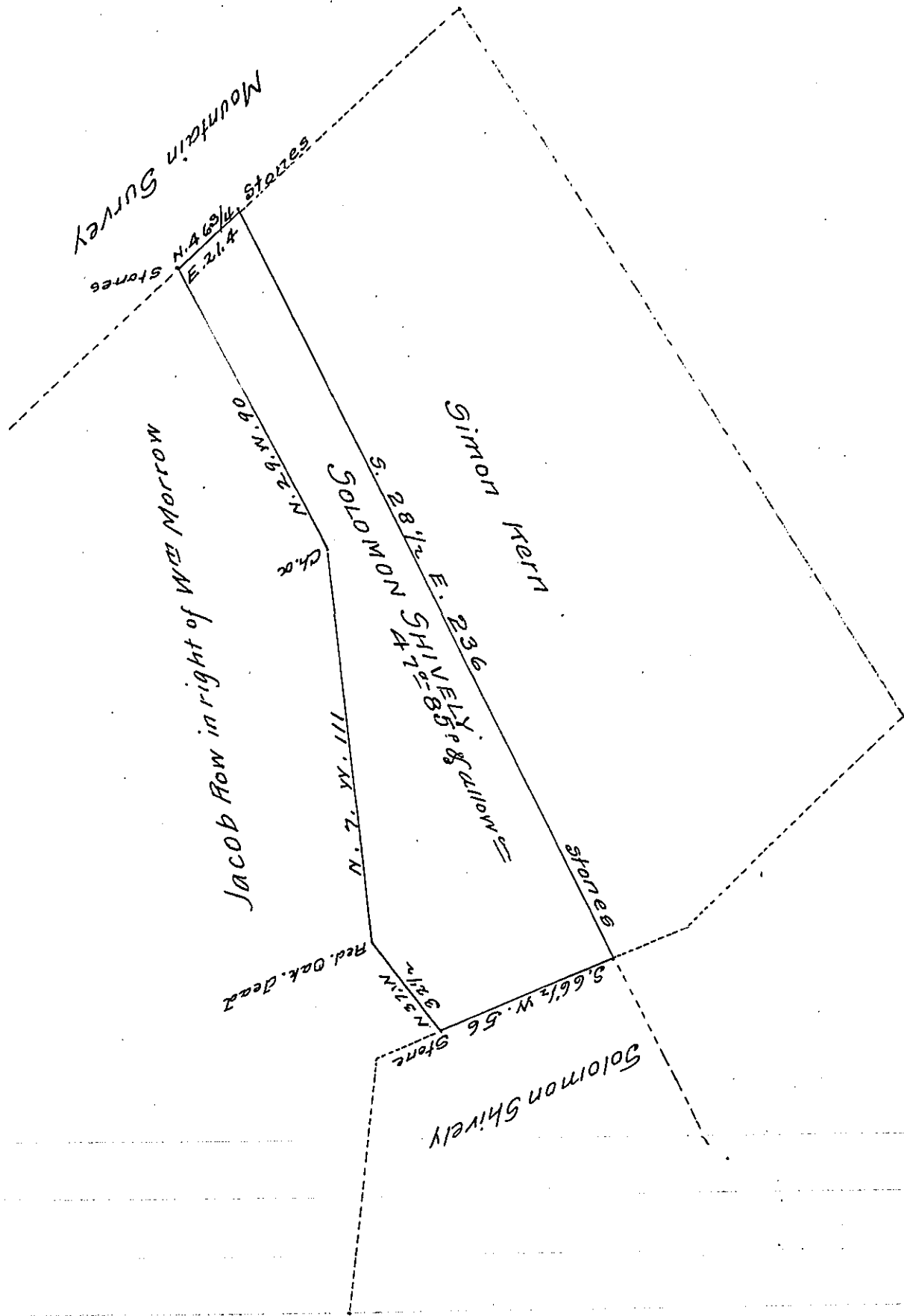


FORM NO. 1.



Situate in Tyboine Township Perry County Containing Forty seven acres - eighty five perches and allowance of six p^c Cent for roads &c.

It being part of 156^a-147^p allowance Surveyed September 19th 1794 on a warrant of 150^a granted Daniel McClintock dated June 23^d 1794.

Surveyed as above for Solomon Shively the Owner April the 19th 1828

p^c W^m Wilson D.S.

Gabriel Hiester S.G.

IN TESTIMONY that the above is a copy of the original remaining on file in the Department of Internal Affairs of Pennsylvania, made conformably to an Act of Assembly approved the 16th day of February 1833, I have hereunto set my hand and caused the Seal of said Department to be affixed at Harrisburg, this seventeenth day of December 1907

Henry Howell
Secretary of Internal Affairs.